



Township of North Kawartha

280 Burleigh Street, PO Box 550, Apsley, ON K0L 1A0
Tel: 705-656-4445 | 1-800-755-6931 | Fax: 705-656-4446
www.northkawartha.ca

Notice of Public Meeting

Notice is hereby given that the Corporation of the Township of North Kawartha has received an application to purchase a municipal road allowance and Council will consider enacting a by-law to stop up, to close and to sell to the abutting landowner(s) those lands described as follows:

Subject Lands

1. Pt Municipal Rdal between Lots 5 & 6, Concession 9, Geographic Township of Chandos, Township of North Kawartha, being Part 1 on Plan 45R-17689, being part of PIN 28275-0153 (LT), near 525 West Bay Road

The proposed by-law will come before Council for consideration at the regular meeting of Council on:

Date: Tuesday, March 18, 2025
Time: **9:30 a.m.**
Location: North Kawartha Township Municipal Office, 280 Burleigh Street, Apsley, Ontario
(Hybrid meeting: participate in-person, electronically or by phone, refer to Additional Information below)

This meeting is open to the public and any person or by his counsel, solicitor or agent who claims that his land will be prejudicially affected and attends the meeting will be provided with an opportunity to submit verbal comments in support or in opposition to the application. Written submissions may be made no later than 4:00 p.m. on the day prior to the meeting to: planning@northkawartha.ca, or Fax: (705) 656-4446, by mail or in person: PO Box 550, 280 Burleigh Street, Apsley, ON K0L 1A0

Further information pertaining to this notice is available between the hours of 9:00 a.m. and 4:30 p.m. Monday through Friday, in the Planning Department of the Corporation of the Township of North Kawartha, Municipal Office, 280 Burleigh Street, Apsley, Ontario. **Please direct your inquiries to planning@northkawartha.ca** or by phone to 705-656-4445 (ext. 264).

Additional Information:

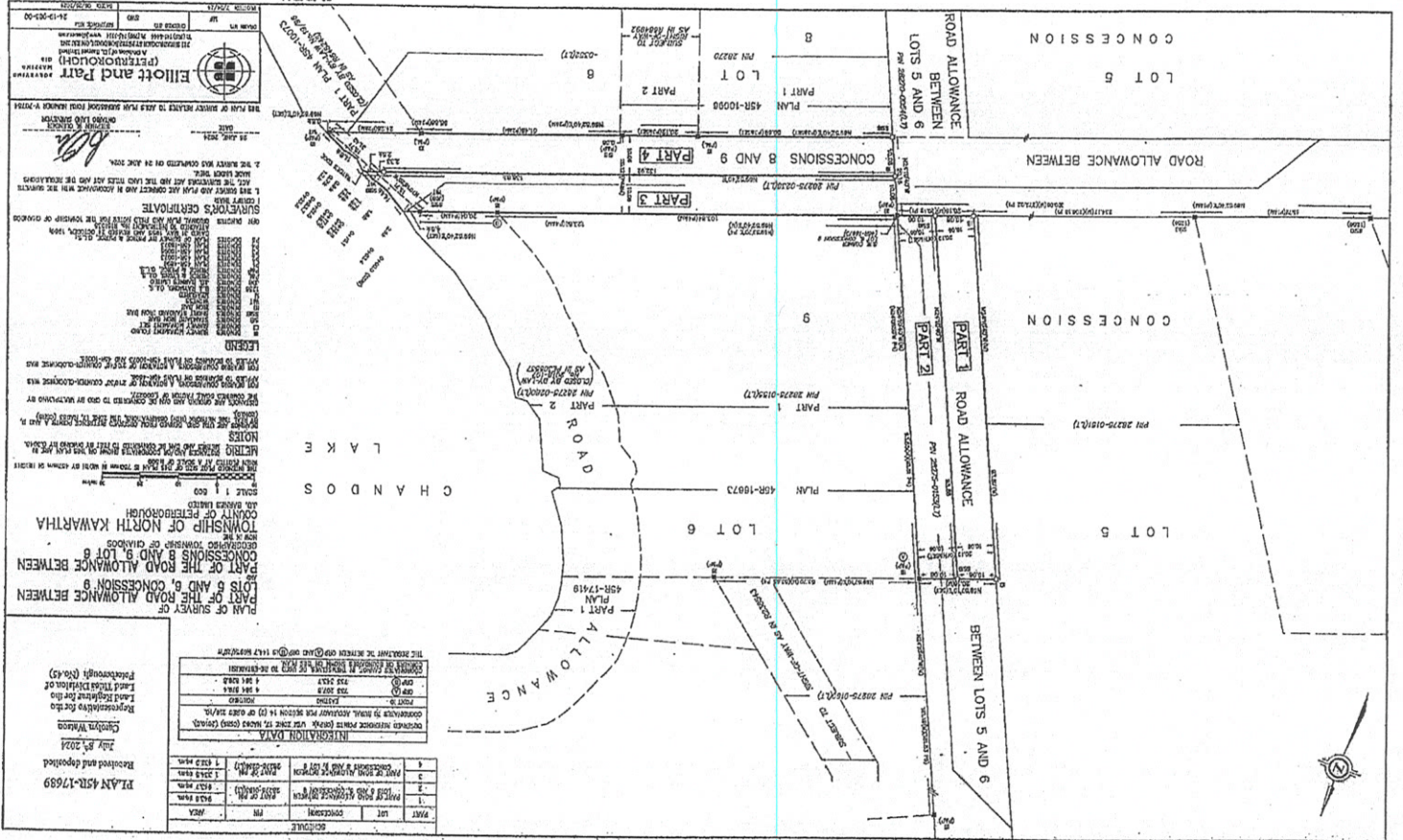
Meetings are held in a hybrid format and are open to the public. You may participate in-person, electronically or by phone. Instructions to join the meeting are available on the current agenda page (link below).

View the current agenda: www.northkawartha.ca/currentagenda
Subscribe to receive all planning notices: www.northkawartha.ca/subscribe

Recorded meetings will be posted on the Township [YouTube](#) channel as soon as possible after the meeting for public viewing.

Dated at the Township of North Kawartha this 12th day of February, 2025.

Connie Parent, Clerk
Township of North Kawartha
P.O. Box 550, 280 Burleigh St.
Apsley, Ontario K0L 1A0
Phone: 800-755-6931 or (705) 656-4445 Ext. 234, Fax: (705) 656-4446



Part	Lot	Concession	Area
1	5	2023-01627	1.0000 ha
2	5	18973	1.0000 ha
3	5	17418	1.0000 ha
4	6	17418	1.0000 ha
5	6	18973	1.0000 ha
6	6	2023-01627	1.0000 ha

INTEGRATION DATA
 OCCURRED IN THE MEASUREMENT PER SECTION 14 (1) OF THE SURVEY ACT.
 DATE: 1998-08-14
 TIME: 10:30 AM
 LOCATION: 43R-17418
 OPERATOR: M. W. WILSON
 THE BOUNDARY OF THE MEASUREMENT IS SHOWN BY A DOTTED LINE.

PLAN 45R-17690
 Revised and deposited:
 20th July, 2004
 Registered for the
 Land Transfer Office
 Perth (No. 45)

PLAN OF SURVEY OF
PART OF THE ROAD ALLOWANCE BETWEEN
LOTS 5 AND 6, CONCESSION 9
CONCESSIONS 8 AND 9, LOT 6
TOWNSHIP OF NORTH KAWARTHIA
COUNTY OF PETERBOROUGH
SCALE 1:500
DATE: 1998-08-14
TIME: 10:30 AM
LOCATION: 43R-17418
OPERATOR: M. W. WILSON
THE BOUNDARY OF THE MEASUREMENT IS SHOWN BY A DOTTED LINE.

NOTES
 1. THE MEASUREMENT WAS MADE BY THE SURVEYOR IN THE PRESENCE OF THE PROPRIETORS OF THE LAND AND THE SURVEYOR HAS BEEN SATISFIED THAT THE MEASUREMENT IS CORRECT.
 2. THE MEASUREMENT WAS MADE BY THE SURVEYOR IN THE PRESENCE OF THE PROPRIETORS OF THE LAND AND THE SURVEYOR HAS BEEN SATISFIED THAT THE MEASUREMENT IS CORRECT.
 3. THE MEASUREMENT WAS MADE BY THE SURVEYOR IN THE PRESENCE OF THE PROPRIETORS OF THE LAND AND THE SURVEYOR HAS BEEN SATISFIED THAT THE MEASUREMENT IS CORRECT.
 4. THE MEASUREMENT WAS MADE BY THE SURVEYOR IN THE PRESENCE OF THE PROPRIETORS OF THE LAND AND THE SURVEYOR HAS BEEN SATISFIED THAT THE MEASUREMENT IS CORRECT.
 5. THE MEASUREMENT WAS MADE BY THE SURVEYOR IN THE PRESENCE OF THE PROPRIETORS OF THE LAND AND THE SURVEYOR HAS BEEN SATISFIED THAT THE MEASUREMENT IS CORRECT.
 6. THE MEASUREMENT WAS MADE BY THE SURVEYOR IN THE PRESENCE OF THE PROPRIETORS OF THE LAND AND THE SURVEYOR HAS BEEN SATISFIED THAT THE MEASUREMENT IS CORRECT.
 7. THE MEASUREMENT WAS MADE BY THE SURVEYOR IN THE PRESENCE OF THE PROPRIETORS OF THE LAND AND THE SURVEYOR HAS BEEN SATISFIED THAT THE MEASUREMENT IS CORRECT.
 8. THE MEASUREMENT WAS MADE BY THE SURVEYOR IN THE PRESENCE OF THE PROPRIETORS OF THE LAND AND THE SURVEYOR HAS BEEN SATISFIED THAT THE MEASUREMENT IS CORRECT.
 9. THE MEASUREMENT WAS MADE BY THE SURVEYOR IN THE PRESENCE OF THE PROPRIETORS OF THE LAND AND THE SURVEYOR HAS BEEN SATISFIED THAT THE MEASUREMENT IS CORRECT.
 10. THE MEASUREMENT WAS MADE BY THE SURVEYOR IN THE PRESENCE OF THE PROPRIETORS OF THE LAND AND THE SURVEYOR HAS BEEN SATISFIED THAT THE MEASUREMENT IS CORRECT.
 11. THE MEASUREMENT WAS MADE BY THE SURVEYOR IN THE PRESENCE OF THE PROPRIETORS OF THE LAND AND THE SURVEYOR HAS BEEN SATISFIED THAT THE MEASUREMENT IS CORRECT.
 12. THE MEASUREMENT WAS MADE BY THE SURVEYOR IN THE PRESENCE OF THE PROPRIETORS OF THE LAND AND THE SURVEYOR HAS BEEN SATISFIED THAT THE MEASUREMENT IS CORRECT.
 13. THE MEASUREMENT WAS MADE BY THE SURVEYOR IN THE PRESENCE OF THE PROPRIETORS OF THE LAND AND THE SURVEYOR HAS BEEN SATISFIED THAT THE MEASUREMENT IS CORRECT.
 14. THE MEASUREMENT WAS MADE BY THE SURVEYOR IN THE PRESENCE OF THE PROPRIETORS OF THE LAND AND THE SURVEYOR HAS BEEN SATISFIED THAT THE MEASUREMENT IS CORRECT.
 15. THE MEASUREMENT WAS MADE BY THE SURVEYOR IN THE PRESENCE OF THE PROPRIETORS OF THE LAND AND THE SURVEYOR HAS BEEN SATISFIED THAT THE MEASUREMENT IS CORRECT.
 16. THE MEASUREMENT WAS MADE BY THE SURVEYOR IN THE PRESENCE OF THE PROPRIETORS OF THE LAND AND THE SURVEYOR HAS BEEN SATISFIED THAT THE MEASUREMENT IS CORRECT.
 17. THE MEASUREMENT WAS MADE BY THE SURVEYOR IN THE PRESENCE OF THE PROPRIETORS OF THE LAND AND THE SURVEYOR HAS BEEN SATISFIED THAT THE MEASUREMENT IS CORRECT.
 18. THE MEASUREMENT WAS MADE BY THE SURVEYOR IN THE PRESENCE OF THE PROPRIETORS OF THE LAND AND THE SURVEYOR HAS BEEN SATISFIED THAT THE MEASUREMENT IS CORRECT.
 19. THE MEASUREMENT WAS MADE BY THE SURVEYOR IN THE PRESENCE OF THE PROPRIETORS OF THE LAND AND THE SURVEYOR HAS BEEN SATISFIED THAT THE MEASUREMENT IS CORRECT.
 20. THE MEASUREMENT WAS MADE BY THE SURVEYOR IN THE PRESENCE OF THE PROPRIETORS OF THE LAND AND THE SURVEYOR HAS BEEN SATISFIED THAT THE MEASUREMENT IS CORRECT.

PLAN 45R-17690
 Revised and deposited:
 20th July, 2004
 Registered for the
 Land Transfer Office
 Perth (No. 45)