

Township of North Kawartha
280 Burleigh Street, PO Box 550, Apsley, ON K0L 1A0
Tel: 705-656-4445 | 1-800-755-6931 | Fax: 705-656-4446
www.northkawartha.ca

Report to Council

To: Mayor and Council Members
From: Breeanne Martin
Date: March 18, 2025
Subject: Application to Purchase Unopened Municipal Road Allowance (Bolton)

Recommendation:

That following the input received in the public hearing, Council consider passing the appropriate by law to stop up, to close and sell to the abutting land owners or their respective nominees those lands and premises more particularly described in Schedule "A".

Background:

The Township of North Kawartha currently has Policies to offer Unopened Municipal Road Allowances for sale.

Analysis:

When the abutting landowner applied to purchase the Unopened Municipal Road Allowance, the applicant on Schedule "A" has submitted an application according to the above policies, guidelines and application process.

All posting and notice requirements have been met.

To the time of this report, the Clerk and I have not received any written submissions in regards to this application.

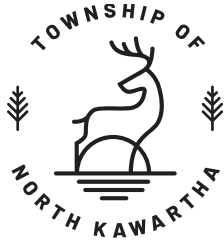
Registered survey plans are available in my office for viewing prior to the meeting or can be requested during the meeting.

Financial Implications:

Fees are set in the policies. Legal fees are the responsibility of the applicants.

Strategic and/or Other Plans:

4.0 Protect and enhance the natural and human environment.



Township of North Kawartha
280 Burleigh Street, PO Box 550, Apsley, ON K0L 1A0
Tel: 705-656-4445 | 1-800-755-6931 | Fax: 705-656-4446
www.northkawartha.ca

In Consultation With:

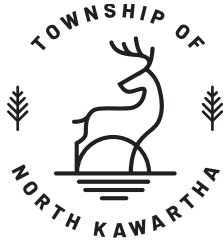
N/A

Attachment:

Schedule "A"

Copy of the Survey

By-Law

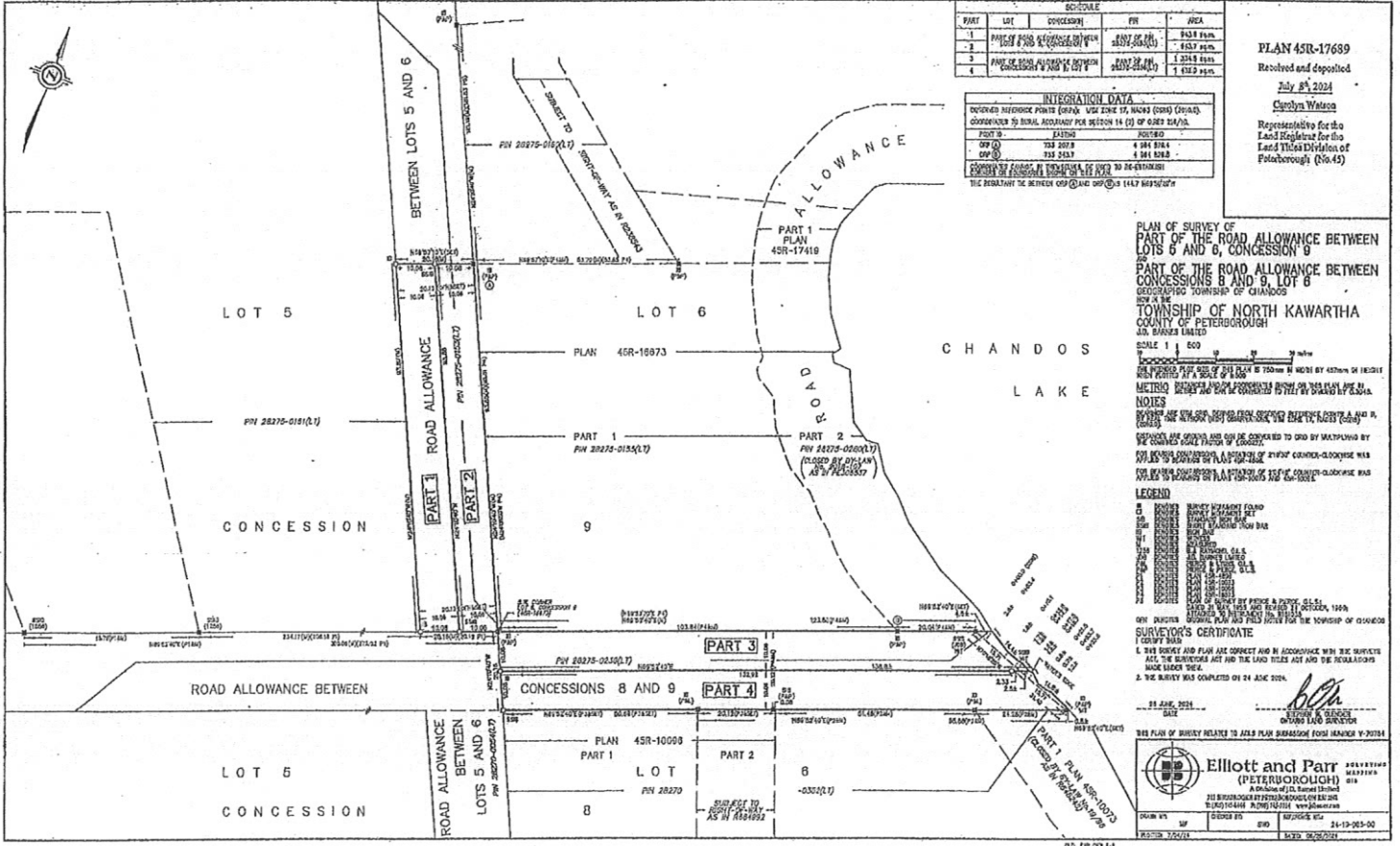


Township of North Kawartha
280 Burleigh Street, PO Box 550, Apsley, ON K0L 1A0
Tel: 705-656-4445 | 1-800-755-6931 | Fax: 705-656-4446
www.northkawartha.ca

SCHEDULE 'A'

In the Township of North Kawartha, in the County of Peterborough, Province of Ontario, more particularly described as follows:

1. Pt Municipal Rdal between Lots 5 & 6, Concession 9, Geographic Township of Chandos, Township of North Kawartha, being Part 1 on Plan 45R-17689, being part of PIN 28275-0153 (LT).- near 525 West Bay Road



SCHEDULE				
PART	LOT	CONVESSION	FR	AREA
1	PART 1	CONVESSION 9	45R-17418	0.432 HECT.
2	PART 2	CONVESSION 9	45R-17418	0.432 HECT.
3	PART 3	CONVESSION 9	45R-17418	0.432 HECT.
4	PART 4	CONVESSION 9	45R-17418	0.432 HECT.

INTEGRATION DATA	
ORDERED REFERENCE POINTS (ORP'S)	USG ZONE 17, NAD83 (CANAD)
CONVERSION TO METRIC ACCURACY FOR SECTION 14 (2) OF PART 24(1)	
POINT NO.	COORDINATES
ORP 1	432073.0 532073.0
ORP 2	432073.0 532073.0
ORP 3	432073.0 532073.0
ORP 4	432073.0 532073.0
ORP 5	432073.0 532073.0
ORP 6	432073.0 532073.0
ORP 7	432073.0 532073.0
ORP 8	432073.0 532073.0
ORP 9	432073.0 532073.0
ORP 10	432073.0 532073.0
ORP 11	432073.0 532073.0
ORP 12	432073.0 532073.0
ORP 13	432073.0 532073.0
ORP 14	432073.0 532073.0
ORP 15	432073.0 532073.0
ORP 16	432073.0 532073.0
ORP 17	432073.0 532073.0
ORP 18	432073.0 532073.0
ORP 19	432073.0 532073.0
ORP 20	432073.0 532073.0
ORP 21	432073.0 532073.0
ORP 22	432073.0 532073.0
ORP 23	432073.0 532073.0
ORP 24	432073.0 532073.0
ORP 25	432073.0 532073.0
ORP 26	432073.0 532073.0
ORP 27	432073.0 532073.0
ORP 28	432073.0 532073.0
ORP 29	432073.0 532073.0
ORP 30	432073.0 532073.0
ORP 31	432073.0 532073.0
ORP 32	432073.0 532073.0
ORP 33	432073.0 532073.0
ORP 34	432073.0 532073.0
ORP 35	432073.0 532073.0
ORP 36	432073.0 532073.0
ORP 37	432073.0 532073.0
ORP 38	432073.0 532073.0
ORP 39	432073.0 532073.0
ORP 40	432073.0 532073.0
ORP 41	432073.0 532073.0
ORP 42	432073.0 532073.0
ORP 43	432073.0 532073.0
ORP 44	432073.0 532073.0
ORP 45	432073.0 532073.0
ORP 46	432073.0 532073.0
ORP 47	432073.0 532073.0
ORP 48	432073.0 532073.0
ORP 49	432073.0 532073.0
ORP 50	432073.0 532073.0
ORP 51	432073.0 532073.0
ORP 52	432073.0 532073.0
ORP 53	432073.0 532073.0
ORP 54	432073.0 532073.0
ORP 55	432073.0 532073.0
ORP 56	432073.0 532073.0
ORP 57	432073.0 532073.0
ORP 58	432073.0 532073.0
ORP 59	432073.0 532073.0
ORP 60	432073.0 532073.0
ORP 61	432073.0 532073.0
ORP 62	432073.0 532073.0
ORP 63	432073.0 532073.0
ORP 64	432073.0 532073.0
ORP 65	432073.0 532073.0
ORP 66	432073.0 532073.0
ORP 67	432073.0 532073.0
ORP 68	432073.0 532073.0
ORP 69	432073.0 532073.0
ORP 70	432073.0 532073.0
ORP 71	432073.0 532073.0
ORP 72	432073.0 532073.0
ORP 73	432073.0 532073.0
ORP 74	432073.0 532073.0
ORP 75	432073.0 532073.0
ORP 76	432073.0 532073.0
ORP 77	432073.0 532073.0
ORP 78	432073.0 532073.0
ORP 79	432073.0 532073.0
ORP 80	432073.0 532073.0
ORP 81	432073.0 532073.0
ORP 82	432073.0 532073.0
ORP 83	432073.0 532073.0
ORP 84	432073.0 532073.0
ORP 85	432073.0 532073.0
ORP 86	432073.0 532073.0
ORP 87	432073.0 532073.0
ORP 88	432073.0 532073.0
ORP 89	432073.0 532073.0
ORP 90	432073.0 532073.0
ORP 91	432073.0 532073.0
ORP 92	432073.0 532073.0
ORP 93	432073.0 532073.0
ORP 94	432073.0 532073.0
ORP 95	432073.0 532073.0
ORP 96	432073.0 532073.0
ORP 97	432073.0 532073.0
ORP 98	432073.0 532073.0
ORP 99	432073.0 532073.0
ORP 100	432073.0 532073.0

PLAN 45R-17689
 Received and deposited
 July 8th 2024
 Carolyn Watson
 Representative for the
 Land Division of
 Peterborough (No.45)

PLAN OF SURVEY OF
 PART OF THE ROAD ALLOWANCE BETWEEN
 LOTS 6 AND 6, CONCESSION 9
 OF
 PART OF THE ROAD ALLOWANCE BETWEEN
 CONCESSIONS 8 AND 9, LOT 6
 OF THE TOWNSHIP OF CHANDOS
 COUNTY OF PETERBOROUGH
 TOWNSHIP OF NORTH KAWARTHA
 COUNTY OF PETERBOROUGH
 J.A. DANIEL LIMITED
 SCALE 1 : 500
 METRIC MEASUREMENTS
 NOTES
 LEGEND

SURVEYOR'S CERTIFICATE
 I, THE SURVEYOR AND PLAN ARE CORRECT AND IN ACCORDANCE WITH THE SURVEY ACT AND THE REGULATIONS MADE UNDER THE ACT AND THE REGULATIONS MADE UNDER THE ACT.
 THE SURVEY WAS COMPLETED ON 24 JUNE 2024.

Elliott and Parr
 (PETERBOROUGH)
 A Division of J.S. Daniel Limited
 210 BRUNSWICK STREET, PETERBOROUGH, ONTARIO
 K9J 1K4
 TEL: (705) 751-1111 FAX: (705) 751-1112
 WWW.ELLIOTTANDPARR.COM